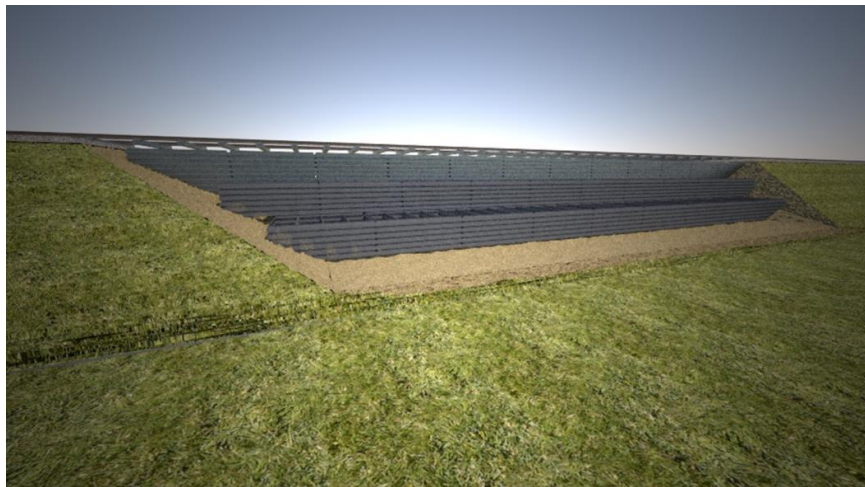




# METALITH™ TRACK STABILIZATION SYSTEM



The Metalith Railway Stabilization System is a railway embankment protection system installed within existing Right-of-Way and conforming to existing embankment slopes. The basic principle of the system is reliance on the inherent and proven stability of the native slopes during normal conditions. Design of the system centers on protecting the embankment from scour of the toe, and minimizing and stabilizing the effects of sheet flow and rill erosion of the face of the embankment slope. The design also eliminates the buildup of hydrostatic pressure within the embankment by utilizing specially designed perforated Metalith panels. Construction of the Metalith Railway Stabilization System includes fill material selection and installation practices providing the long term stability to trouble prone areas. The system allows for the creation of exposed, stepped faces, or buried, hidden components with soil contouring matching the existing native embankment slopes.